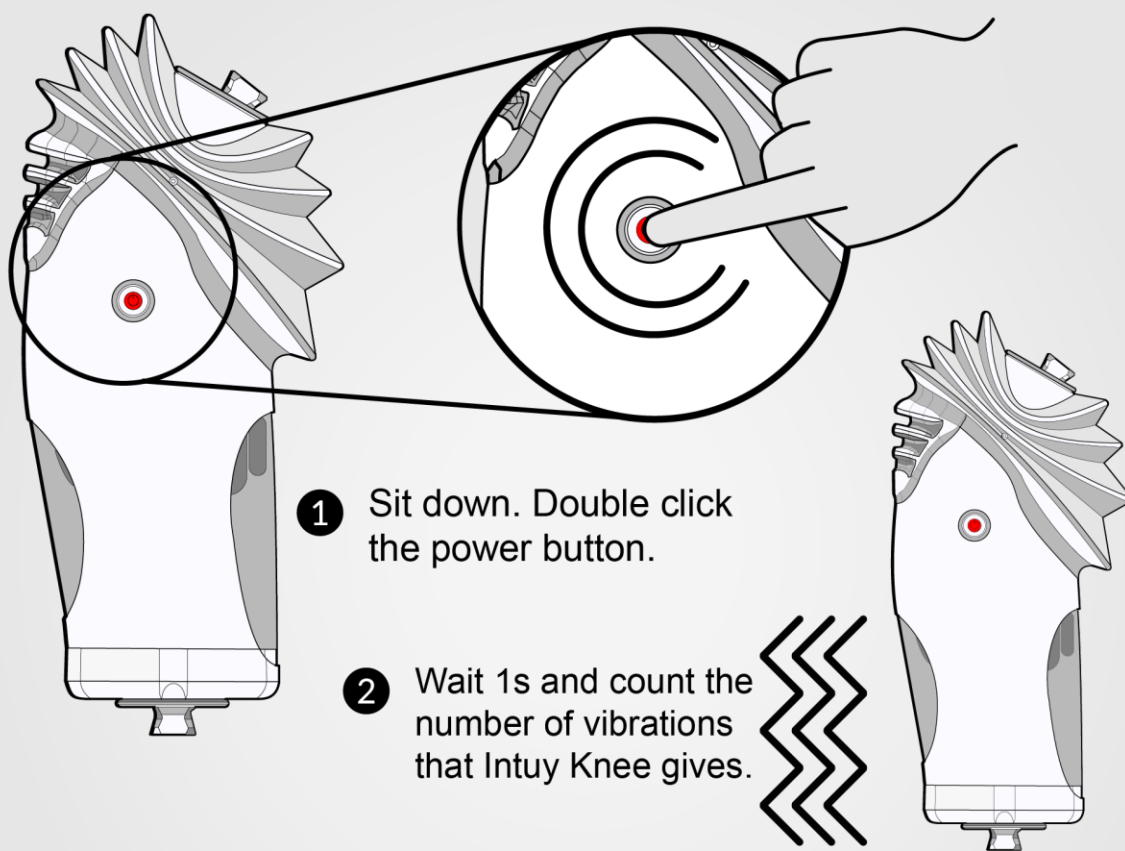


# Battery Level Indication Without Intuy App:

When Intuy Knee is in Sleep mode (e.g., when seated), double click the power button, and after one second, the Intuy Knee will vibrate to indicate its battery level.

**Note:** only possible with Intuy Knee firmware version 2.5.13 or above.

## Steps to get battery level indication:



- 1 Sit down. Double click the power button.
- 2 Wait 1s and count the number of vibrations that Intuy Knee gives.

3 The number of vibrations indicate a specific battery level range.

